



PRE-DEPARTURE GUIDE

FRASER INTERNATIONAL
COLLEGE

WELCOME



Welcome to Fraser International College

Congratulations on your acceptance to Fraser International College! This guide will help you in preparing for your arrival at FIC. Please review the various sections as they contain all the important information that you will need to prepare for your journey to Vancouver, and your arrival at FIC.

This Pre-Departure Guide is also available online as an interactive website. Do visit the online guide for a variety of informative videos. http://study.navitas.com/FIC_Microsite_PD_Home.html

We look forward to seeing you soon!

PRE-DEPARTURE GUIDE



I have accepted my offer, now what?

FIC Math Placement Test

One week before course registration, students entering the UTP II Business Administration, Computing Science, Environment Science or Engineering Science programs will be invited to take the FIC Math Assessment. This assessment must be completed before they may register for courses.

This assessment is designed to help students select the correct Math course in their first semester and is not a pass or fail test. The assessment takes one hour and once a student logs into the assessment they need to finish it, they cannot log back in. However, students should take the test seriously as the assessment will determine if you are able to select the necessary Calculus course for your program.

The test itself will cover thirty questions, and include a variety of standard Year 12 math topics. Students can take a practice test on the following website:

https://dalton.chem.sfu.ca/res/sfu/bkastner/Veso/CRT%20Practice/CRT_Pactice_Test.html

Online Course Registration

Approximately five weeks before the start of the semester, students will receive an email from FIC with detailed instructions about course registration.

In order to register in courses, students must ensure that they have cleared any remaining conditions on their Letter of Offer, such as providing an IELTS score, certified copies of transcripts, or final results from your current high school studies. If you have a condition on your Letter of Offer and you are unsure how to meet the condition, please send an email to the FIC Marketing Manager you have been in contact with, or to **info@fraseric.ca** and be sure to provide your FIC Student ID number. Your FIC Student ID number is listed on the Letter of Offer in the top left hand corner.

FIC provides an online Enrolment Book on our website which is available for download on the following website:

<https://www.fraseric.ca/publications-and-forms>

The Enrolment Book includes a list of all required courses for each FIC program, as well as a detailed course description for all courses taught at FIC.

Are you feeling overwhelmed by the course offerings and not knowing which courses to choose? Don't worry, when we send out the detailed course registration email, we will also let you know which subjects you should be selecting in your first semester.

Once you have arrived at FIC, you can have detailed course planning and progression discussions with the FIC Academic Advisors, as well as attend information sessions from every SFU Faculty.

Orientation Day at FIC

Orientation will be one of the most important experiences you will have as a student. It is where you will meet the people who will become your friends in Canada and the people who will help you to be academically successful.

Here are a few tips to make your orientation experience fantastic!

- Arrive on time! You will need to be at FIC by 9:00am on orientation day
- Bring a small backpack with paper and a pen and a water bottle
- Wear comfortable shoes, as there will be a campus tour
- Dress for comfort and the weather
- Bring your Passport, Study Permit and FIC Letter of Offer
- Be ready to meet people from all over the world!

During orientation there will be representatives from Canadian mobile phone companies if you wish to purchase a Canadian Sim Card or arrange for a new mobile phone. Also a few of the Canadian banks will also be present and can help advise you on how to open a bank account.

PRE-DEPARTURE GUIDE



Accommodation Options

There are a variety of on-campus and off-campus options for you to choose from. If you are unsure if you want to live in on-campus Residence or off-campus Homestay, both options allow you to commit for one semester with the opportunity to extend.

On-Campus: SFU Residence

Living in Residence (or "Res") is a great way to get involved in the many programs and activities available on campus, meet new people who will become lifelong friends, have easy access to classes, the library, and fitness facilities at SFU.

Close to 2000 students live on campus in traditional dormitory-style residences, townhouses studio suites, and one and two-bedroom apartments. All first year students at FIC and SFU who are offered a room in SFU Residence will be placed in The Towers.

The Towers are dorm-style residences with a maximum capacity of 727 students. They offer co-ed, single-gender and study-intensive floors, and no matter which floor you are on you will have a single-occupancy room (ie., no roommates). All rooms in The Towers include a local telephone line, high-speed internet and basic cable television.

For more information on The Towers, visit this website:

<http://www.sfu.ca/students/residences/residences/towers/overview.html>

On-Campus Dining: SFU Dining Services

SFU Dining Services offers a large selection of food and beverage items at various locations across the Burnaby campus. All students in SFU Residence must have a meal plan which provides unlimited access 24 hours a day, 7 days a week, and is all that you care to eat.

Whether you are a vegetarian or vegan, have a dairy or gluten intolerance, or simply enjoy Halal meats, SFU Residence Dining Hall has something for everyone to enjoy. Follow them on Facebook to stay up-to-date on Dining Services Information. <https://www.facebook.com/SFUDiningServices>

Off-Campus Homestay

For many students, the opportunity to stay with a Canadian family, off-campus and in the community, offers special appeal. As a homestay student, you will have the chance to be a part of a family, taking part in family activities and celebrating special occasions.

All families are within commuting distance from FIC. Homestay includes meals and your selected package may be upgraded to include a private bathroom.

To explore homestay options, we recommend First Choice International Placement and Vancouver Central Homestay.

- www.fciplacement.com
- www.vancouvercentralhomestay.com

Private Accommodation: Off-Campus and On-Campus “UniverCity”

A wide range of off-campus accommodation is available to FIC students, including private rentals and shared accommodation. The following online resource will provide you with up-to-date listings and is a good place to start looking for private accommodation.

<http://www.sfu.och101.com/>

PRE-DEPARTURE GUIDE



Packing Guide: What to Bring vs. What to Buy

Don't worry about those airline baggage limits, most of your favourite things will be available for purchase in Vancouver. However, don't forget these important items below!

Important Documents

You should make two photocopies of the following documents, one copy to leave with your family at home and one in your suitcase. Please keep all originals in your carry-on luggage.

- Valid passport
- Letter of Introduction confirming the approval of your study permit from a Canadian Embassy or Consulate
- Temporary Resident Visa (if required)
- FIC Letter of Offer
- FIC Letter of Acceptance
- FIC Deposit Receipt
- Proof of funds available
- Medical records and immunization records, translated if applicable (useful but not required)
- Medical insurance documents (if you have additional medical insurance from your home country)

Clothing

Vancouver has an oceanic climate with four moderate seasons: Winter, Spring, Summer, and Fall. The summer months are typically warm and dry. We are lucky to enjoy relatively warm winters compared to the rest of Canada, though rain is common in the winter months, with occasional snowfall.

The average monthly temperatures in Vancouver are:

- January: average high 6°C, average low 1°C
- February: average high 8°C, average low 1°C
- March: average high 9°C, average low 2°C
- April: average high 12°C, average low 4°C
- May average high 16°C, average low 8°C
- June: average high 19°C, average low 11°C
- July: average high 22°C, average low 12°C
- August: average high 22°C, average low 13°C
- September: average high 18°C, average low 10°C
- October: average high 13°C, average low 6°C
- November: average high 9°C, average low 3°C
- December: average high 6°C, average low 1°C

If you are interested in trying outdoor sports like skiing, snowboarding or snowshoeing, then you will require a heavier winter jacket and pants. Many stores in Vancouver carry these items, as well as some of the ski hills offer equipment and clothing rentals.

Electrical Appliances

Electrical systems in Canada operate at 110 volts and 60 Hz. Most appliances have a North American three-pin plug, although some have a two-pin plug. You can purchase an adaptor/converter for your existing electrical appliances if necessary, or wait to purchase appliances in Vancouver.

Items Needed if Living in SFU Residence

If you are staying in Residence you will need to provide your own sheets, pillows, blankets, and towels. The bed size in Residence is extra-long twin (Single). For more information, visit SFU Residence's website for what is included in your room.

<https://www.sfu.ca/students/residences/residences/towers/features.html>

Private Property Insurance

FIC, SFU and Vancouver are generally considered very safe. However, as in most big cities or on large campuses, property theft does occur. You are strongly advised to purchase private property rental insurance, either in Canada or at home before you leave. This should provide coverage for theft or loss of your belongings, as well as property damage due to fire, flood or other unforeseen incidents.

PRE-DEPARTURE GUIDE



Your Arrival to Canada & Vancouver (YVR) Airport

Citizenship & Immigration

Upon arrival you will go through Immigration and will likely be asked the following questions:

- **What is the purpose of your visit?** To study at Fraser International College
- **How much money are you bringing into the country?** Show access to funds, e.x. bank statements etc. Ensure you have proof of access to funds to pay for your tuition and living expenses for at least one year (this can be your parents or sponsors bank statements). Annual living expenses for Vancouver are estimated at \$12,000 to \$15,000 CDN per year.
- **Where are you going to school? What program?** Fraser International College, show your Letter of Offer.

If you are confused, tired, jet-lagged etc, you can request a translator for assistance!

Declaring Your Personal Items to Canadian Customs

A review of current customs regulations should be done prior to your arrival in Canada. You should prepare two copies of a typewritten list of all goods you plan to bring with you through customs, along with any serial numbers and monetary values, where applicable.

For more information, please visit the Canada Border Service Agency <http://www.cbsa-asfc.gc.ca/>

Getting to your Accommodation

Whether you arriving into Vancouver directly from overseas or through another Canadian city, such as Toronto, you will arrive at Vancouver International Airport (YVR). You have a variety of options available to you to get from the airport to your accommodation.

Beaton's Meet & Greet will arrange a driver to collect you from the airport and take you to your accommodation. Please visit the Reservations and Airport Reception Information section on their website.

<http://beatonsmeetandgreet.com/>

Aerocar Service specializes in Vancouver Airport Transportation, Sedan & Limousine Services to Vancouver and the Lower Mainland. For rates and reservations, visit their website.

<http://aerocar.ca/>

Taxi Services are available to you as you exit the airport. Taxis are metered, and a 10-15% gratuity (tip) is appreciated. Taxis accept cash or credit cards.

Public transportation is available, but not very convenient for those first arriving in Vancouver with lots of luggage. Visit TransLink for more information.

<http://www.translink.ca/>

PRE-DEPARTURE GUIDE



Currency, Public Transportation and Useful Apps

The Greater Vancouver Area has 2.4 million people and is the third most populous and third most dense in Canada.

FIC and SFU Burnaby

FIC is located at SFU Burnaby which is the original and largest campus of SFU. All FIC students will study at SFU Burnaby, and the majority of your SFU courses will be taught here as well, with the exception of our Mechatronic Engineering Systems students who will continue years 2, 3, and 4 at SFU Surrey.

Directions to SFU by Skytrain

The nearest SkyTrain station to SFU Burnaby is Production Way, on the Millennium SkyTrain Line. From the Production Way station, take the #145 bus which goes daily to and from the Burnaby campus.

For more information, please visit <http://www.translink.ca/>

Directions to SFU by Bus

#135 Daily, from the Burrard Street SkyTrain Station downtown to SFU Burnaby by way of Hastings Street, Burnaby Mountain Parkway, Gaglardi Way, University Drive East and East Campus road to SFU Exchange.

#143 Monday to Friday only, from Coquitlam Station to SFU Burnaby via Lougheed Highway, Dewdney Trunk Road, Mariner Way, Como Lake Ave., Broadway, Gaglardi Way, University Drive East and East Campus Road to SFU Exchange.

#144 Daily, from Metrotown Station to SFU Burnaby via Central Boulevard Bonsor, Bennett, Nelson, Dover, Oakland, Burris, Canada Way, Sperling, Deer Lake Avenue, Deer Lake Place, Burnaby City Hall, Deer Lake Place, Norland, Sprott, Kensington off-ramp, Sperling, Sperling Station, Sperling, Kensington on-ramp, Broadway, Duthie, Hastings, Burnaby Mountain Parkway, Gaglardi Way, University Drive East and East Campus Road to SFU Exchange.

#145 Daily, from Production Way SkyTrain Station to SFU Burnaby via Production, Broadway, Gaglardi Way, University Drive East and East Campus Road to SFU Exchange.

#N35 Night Bus. Limited night-time service throughout the week from downtown Vancouver (Howe at Pender) to SFU Burnaby via Howe, Georgia, Seymour, Hastings, Burnaby Mountain Parkway, Gaglardi Way, University Drive East and East Campus Road to SFU Exchange.

For more information, please visit <http://www.translink.ca/>

Finding FIC on SFU Burnaby

When you get off at the main bus terminal at SFU Burnaby, watch the video linked here to see how to walk to FIC. <https://www.youtube.com/watch?v=Ry4SYQqiWpw>

Smart Phone Apps

We asked some students which Apps they use most often, and which Apps would be useful for new students. Here are the top suggestions:



SFU Student Companion requires your SFU student ID to log in (not your FIC ID) which will be listed on your student card. This application was developed by a current Software Systems student at SFU. The app provides a quick way to easily access all the important web services a student would use daily. It is available on Google play.



Transit App displays all nearby transport options and departure times instantly, and includes detailed information for 87 cities, including Vancouver. It is available on iTunes App Store and Google Play.



Vancouver City Guide by Trip Advisor Get this free city guides catalog, a personal travel advisor in your pocket! Includes restaurants, attractions, hotels and TripAdvisor reviews stored in the app, all available offline. It is available on iTunes App Store and Google Play.



Street Food Vancouver There is a big "food truck culture" in Vancouver, and this app is the best way to find Vancouver's amazing food trucks. Find up-to-the-minute schedules and locations, updated daily by the vendors. It is available on iTunes App Store and Google Play.



BC Health Services Locator This app helps you find walk-in clinics, hospitals, emergency rooms, immunization locations, after-hour pharmacies, and laboratory services within British Columbia. Only available on iTunes, but all information is also available on their website.

Canadian Currency

Canadian coins are available in the following denominations:

- \$0.01 = 1 cent / a "penny" but are being phased out of circulation
- \$0.05 = 5 cents / a "nickel"
- \$0.10 = 10 cents / a "dime"
- \$0.25 = 25 cents / a "quarter"
- \$1.00 = 1 dollar / a "loonie"
- \$2.00 = 2 dollars / a "toonie"

As the penny exits circulation, cash payments will need to be rounded, either up or down, to the nearest five-cent increment. Payments by credit card or debit card will be charged to the penny.

Canadian bank notes, or bills, are available in denominations of \$5, \$10, \$20, \$50, \$100. Not all vendors accept \$100 bills, so it is best to carry smaller ones. Debit and credit cards are widely accepted.

We advise you to have \$200 CDN in cash on you when arriving in Canada. Please refrain from keeping large sums of cash on your person.

Banking

Large financial institutions in Canada include Canadian Imperial Bank of Commerce (CIBC), Bank of Montreal (BMO), TD Canada Trust, Royal Bank of Canada (RBC), and Scotiabank. Most banks offer special student rates and offer complimentary internet and telephone banking services.

To open a bank account in Canada, you will need your passport, FIC student ID card (provided after Orientation) or Letter of Offer and Letter of Acceptance, proof of registration at FIC and official documentation verifying your Canadian address (such as a phone bill, tenant agreement, or SFU Residence contract).

To obtain a credit card you need to speak with your bank.

Example of Rounding

	Coffee	\$1.83	
	Sandwich	\$2.86	
		\$4.69	Subtotal
		\$0.23	Tax *
		\$4.92	TOTAL AMOUNT

Payment options:

Cheque or Credit Card/Debit Card



No Rounding / No Change

Final payment of **\$4.92**

Cash



Rounding down \$0.02

Final payment of **\$4.90**

Or equivalently

Final change owed: \$0.10

*A tax rate of 5 per cent has been provided for the purposes of illustration. Any taxes (e.g., the Goods and Services Tax/Harmonized Sales Tax), as well as any fees or duties, should be tabulated prior to rounding.

Scotiabank has a branch on SFU Burnaby and RBC has a branch at the base of Burnaby Mountain. Both institutions regularly participate at FIC Orientation and will be available to advise you on how to open a bank account.

Transferring Funds to Canada

Money can be wired from your home country to your Canadian Bank Account once it is open. You can also obtain a bank draft and bring it with you to Vancouver. Be advised that Canadian banks can put long holds on deposits, sometimes up to 20 business days. Make sure to keep copies of all your transaction records for future reference.

Sales Tax

Purchases in Canada are subject to Sales Tax. Note that these taxes are not usually indicated on the price tag and will be added to the price of most goods and services when you pay.

PRE-DEPARTURE GUIDE



Things to do in Vancouver

Vancouver Attractions

There are many fun and exciting things to do in the city. Some local attractions include:

- Granville Island: a vibrant market featuring artisan studios, theatre, restaurants and local produce.
- Gastown: the historic heart of downtown Vancouver! Rich in heritage, Gastown features cobbled streets, a great nightlife, and many restaurants, lounges, and galleries.
- North Shore Mountains: Grouse, Seymour, and Cypress mountains are all within 40 minutes of downtown Vancouver and all offer excellent skiing, snowboarding and hiking.
- Stanley Park: This huge evergreen oasis has majestic cedar, fir and hemlock trees, and you can enjoy the Vancouver Aquarium, arts events, and a stroll or cycle along the 10 KM seawall.
- Playland: Featuring over 30 rides and attractions, Playland amusement park is one of the most popular events at the Pacific National Exhibition (PNE). Having hosted millions of thrill seekers since its opening in 1910, this 15-acre hot spot for people of all ages is perfect for those who really want to have some fun. If you enjoy a good scare, be sure to check out their Fright Nights during the month of October.

Professional sports play a huge part of the Vancouver community:

- **Hockey:** Vancouver is home to the NHL's Vancouver Canucks <http://canucks.nhl.com/>
- **Football:** Vancouver is home to the CFL's BC Lions <http://www.bclions.com/>
- **Soccer:** Vancouver is home to the MLS Vancouver Whitecaps <http://www.whitecapsfc.com/>

British Columbia and Beyond

Take a break from your books and classes from time to time and enjoy all that British Columbia has to offer. Whether you choose to snowboard at Whistler, hike at a provincial park, shop in Victoria or drive through the Okanagan, there's truly something for all budgets and interests. Check your Student Handbook via the FIC Student Portal for more details.

Get Connected with Vancouver Events

So you are excited to begin exploring the city or you want to check out which bands are coming to town but don't know where to look.

Try these links below:

- **VanCity Buzz** is a local media webpage which frequently features events and activities to do around town, plus covers local news stories <http://www.vancitybuzz.com/>
- **Ticketmaster** is where you will find tickets for any professional sporting event and major concert to come to Vancouver <http://www.ticketmaster.ca/>
- **CinemaClock Vancouver** lists movie times at a series of theaters across Metro Vancouver <http://www.cinematiclock.com/Vancouver.html>

Alcohol and Drug Use

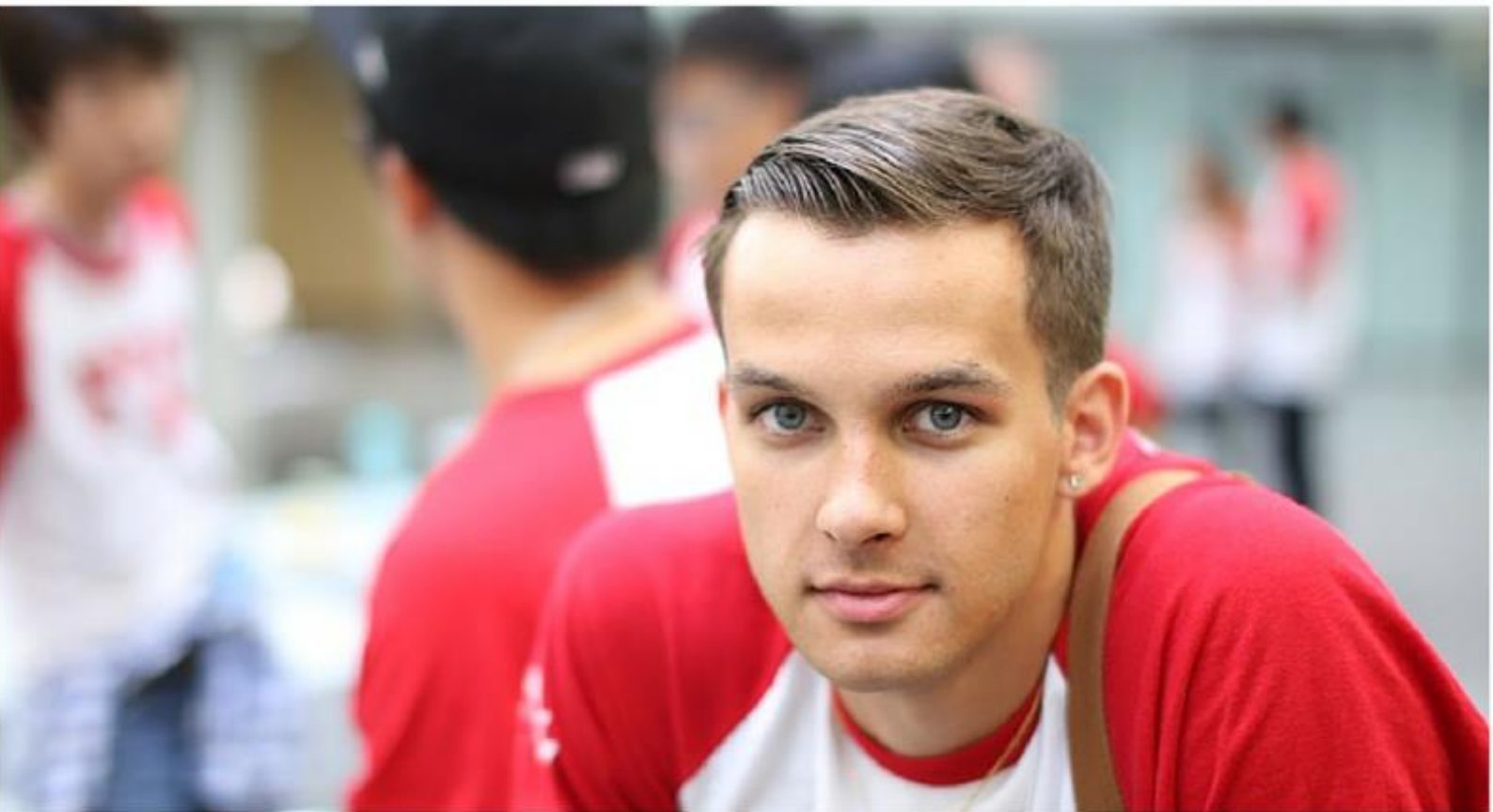
Vancouver is a city full of opportunities to try new things, meet new people and have adventures. It is important though that you understand the local laws to maintain your legal status in Canada. The age to consume alcohol is 19 years old and you will require 2 pieces of ID of which one must have a photo to enter drinking establishments.

The possession or use of illegal substances, such as non-prescription drugs (marijuana, cocaine, etc.) is against the law and you can be arrested and charged by the police. You may also get a criminal record. That can prevent you from traveling to other countries, getting certain jobs, and applying for citizenship.

For more information on laws in Canada please view this website:

<http://cbabc.org/For-the-Public/Dial-A-Law/Scripts>

PRE-DEPARTURE GUIDE



Get Involved at FIC

Open Mic Night

The first Friday of every semester FIC holds an Open Mic Night at 6:00 PM. It is a great way to begin your adventure at FIC and in Vancouver.

Come out and show off your talent! Whether you're a singer, guitarist, dancer or mime, we will have a stage for you to show off! If you don't want to perform but want to attend, that is great as well! It is one of the best events to meet new people early on in the year and form some quick friendships.

Student Leadership Opportunities

Our goal is to help you find the opportunities that will help you grow and learn both inside and outside of the classroom. Whether you are interested in building your resume, meeting new friends, or developing leadership skills, there is an opportunity for you!

All student leadership opportunities and application forms are available <http://student.fraseric.ca/>

Community Transition Program

Who we are: The Community Transition Program provides academic and personal support for FIC's student population. Every semester, it welcomes 300 - 700 new students at FIC Orientation and then

provides mentorship for new and current students throughout the semester. We provide the foundation for students to develop a network that will enable them to succeed at FIC.

What we do: We run Orientation for new students and then provide semester support for all students through the Peer Advising program. Becoming part of this program gives you the opportunity to be the bridge that connects students to FIC community and familiarizes students with campus resources.

FIC ACT Team

Who we are: The FIC Awareness Campaign Team (FIC ACT) raises awareness surrounding key problems and concerns that occupy student life at FIC and at SFU.

What we do: FIC ACT works as a team to promote and deliver an awareness campaign during one week per a semester. The FIC ACT Team will plan, coordinate, and execute the week, focusing on different ways to engage students in different issues.

Peer Education

Who we are: We are an entirely student run program designed to help students with academic challenges. Peer Education provides opportunities for student engagement, academic success, and professional development

What we do: Peer Education provides one on one nonjudgmental assistance to students over all courses offered at FIC. We create an environment where students feel they are receiving guidance from trusted friends who are able to understand matters from their perspective.

IT Supersquad

Who we are and what we do: We are a small group of tech-savvy FIC alumni who maintain all of FIC's computers, printers, projectors, and photocopiers while helping staff and students resolve their technical issues.

Other Opportunities

Are you interested in getting involved at FIC but can't commit to a specific program? We are always looking for volunteers with a variety of skill sets for special events at FIC. Some of these events include Graduation, case competitions, mentorship opportunities, and presentations.

PRE-DEPARTURE GUIDE



FIC Student Portal and Handbook

Your online access to FIC policies and procedures, and where you will register for courses.

Student Portal

The Student Portal allows for online access to FIC and hosts all of your personal account details. It is the platform for course registration, where you access the course Moodle, find instructor and staff contact information, as well where you will find the FIC Student Handbook.

<https://learning.fraseric.ca/user/login>

To access the Student Portal, click on the link above and enter the following:

Username: your FIC Student ID

Password: your birth date in YYYY-MM-DD format

Student Handbook

The Student Handbook is available on the Student Portal and has a variety of information on:

- Academic Issues
- Accommodation
- Campus Resources
- Entertainment
- Exploring BC and Beyond
- Fees and Budget
- FIC Support Services
- Life in Vancouver
- Pathways at FIC
- Safety and Security
- Student Visas
- Transportation
- Welfare and Advice

Policies and Procedures

FIC policies and procedures are available online for download.

<https://www.fraseric.ca/policies-and-procedures>

PRE-DEPARTURE GUIDE



Health Insurance & SFU Campus Services Health Insurance

Guard.Me Health Insurance

Guard.me is a private medical insurance provider, and all incoming students are automatically set up for coverage. Students are provided with coverage for medical issues including hospitalization and emergencies. The policy does not cover eye and dental care.

MSP (Medical Services Plan of British Columbia) is a publicly run medical insurance program. Students must be in BC for 3 months before being eligible to apply. MSP covers medical issues including hospitalization and emergencies. The policy does not cover eye and dental care.

Students will have guard.me coverage for their first 16 months in BC. Before their coverage expires, you can choose to use extend your coverage with guard.me or choose to use MSP instead.

You can find details about guard.me coverage by going to their website <http://guard.me/>.

In addition, FIC advisors will cover details of your coverage during Orientation Day and will have medical workshops throughout the semester.

To find out when your coverage will start, please visit this website.

<https://www.fraseric.ca/medical-insurance>

SFU Campus Services

As an FIC student you have full access to SFU campus services. Here are some of the many supports and facilities available to you.

SFU Recreation

SFU Rec programs and services provide opportunities for physical activity, stress relief, spiritual connectedness, social bonding, and the learning of new skills. Whether you are beginner or advanced, prefer organized or drop-in, or like individual, team, or group activities, SFU Rec has something for you.

The Burnaby campus's Rec facilities are on the west side of campus near the West Mall Complex (WMX) and just before Residence and Housing.

The facilities include:

- East Gymnasium which can be configured to 3 basketball half courts, 1 basketball full court, 3 volleyball courts, an indoor soccer court or 6 badminton courts
- Central Gymnasium which can be configured to 2 full sized basketball courts, 3 volleyball courts or 10 badminton courts
- Outdoor tennis courts, track, and soccer pitches
- Indoor pool
- Fitness Centre with a variety of equipment to suit your needs, including 45 cardio machines and a full complement of free weights and weight machines
- Hiking trails around Burnaby Mountain

For more information visit their website <https://www.sfu.ca/students/recreation.html>

SFU Library & Bookstore

Bennett Library at SFU Burnaby is the largest of SFU's libraries. During the regular academic year they are open:

- Monday to Thursday 8:00 AM - 11:45 PM
- Friday 8:00 AM - 10:00 PM
- Saturday and Sunday 10:00 AM to 10:00 PM
- During exam times the library is open 24 hours a day.

Did you know that at the Libraries you can borrow gaming systems, such as Nintendo 3DS, Wii, Sony PlayStations, Xbox360, and traditional board games?

SFU Bookstore

The Bookstore is where you purchase your textbooks, SFU clothing and school materials. It is located in the Maggie Benson Centre (across from the Bookstore) and also has online shopping options.

<http://sfu.collegestoreonline.com/>

SFU Interfaith Centre

The Interfaith Centre seeks to facilitate living one's faith, to support the spiritual well-being of students, and to increase understanding of and respect for religious beliefs and practices across campus.

The Interfaith Centre is located in AQ 3200, on the east concourse of the AQ building.

Catholic Mass Tuesday and Thursdays at 12:30 pm and Wednesdays at 11:30 am in the Interfaith Centre

Jumma Prayers Friday at 1:30 pm in the Interfaith Centre

Interfaith affiliated clubs include: Catholic Christians Outreach Club, CFC Youth, Chinese Catholic Club for Dialogue and Truth, Ichthus Korean Catholic Club, Inter-Varsity Christian Fellowship, Ismaili Student Association, Muslim Student Association, Shia Muslim Society, The Point Church, and the University Christian Ministries.

For more info, visit their website <https://www.sfu.ca/students/interfaith.html>